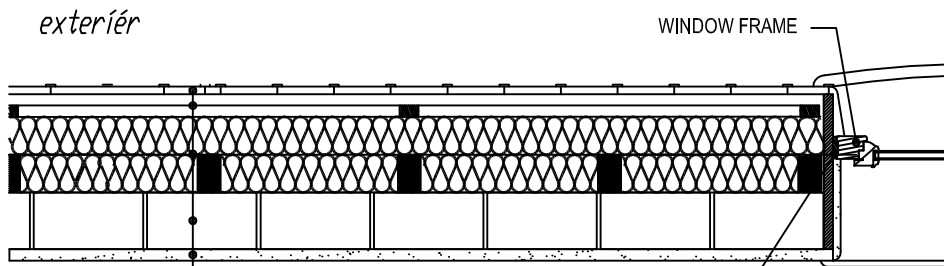


HORIZONTAL SECTION - OUTER WALL

M1:20

FRAMED CONSTRUCTION INSULATED WITH SHEEPS WOOL PACKED ON UNBURNT BRICKS

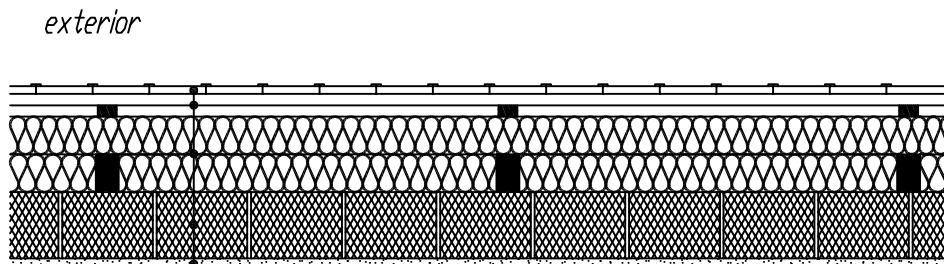


interior

SEALING WITH HEMP OR LINEN ROPE

- TILING - WOOD BOARDS BUTTED, CONNECTIONS COVERED WITH MOULDINGS LARCH, SURFACE CORRECTION WITH WOOD OIL + PIGMENT
- WOOD GRILL SHROUT FROM PLANKS 50/30mm
- DIFFUSION-OPEN WIND INSULATION
- HEAT INSULATION - SHEEP'S WOOL 2 x 140mm IN WOOD GRILL
- INNER WALL FROM UNBURNT BRICKS 150mm
- CLAY PLASTER 15 - 20mm

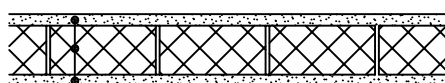
WALL CONSTRUCTION INSULATED WITH SHEEPS WOOL



interior

- TILING - WOOD BOARDS BUTTED, CONNECTIONS COVERED WITH MOULDINGS LARCH, SURFACE CORRECTION WITH WOOD OIL + PIGMENT
- WOOD GRILL SHROUT FROM PLANKS 50/30mm
- DIFFUSION-OPEN WIND INSULATION
- HEAT INSULATION - SHEEP'S WOOL 2 x 140mm IN WOOD GRILL
- HEAT INSULATED BURNT BRICKS POROTHERM 17.5 P+D
- CLAY PLASTER 30mm

DIVIDING PARTITION FROM UNBURNT BRICKS - WALL CONSTRUCTION



- INNER CLAY PLASTER 20mm
- UNBURNT CLAY BRICK, SET ON CLAY MORTAR 130mm (FIRST LAYER FROM BRICKS POROTHERM 17,5 P+D)
- INNER CLAY PLASTER 20mm