

SYMMETRY FIELD CASCADE: THE KEY TO ZERO POINT ENERGY

(with Acknowledgment AND Thanks to Ron Ginsberg.)

Symmetry among planetary bodies creates a living gravity bloodstream within the solar system, in the same way as does symmetry on the membrane of Earth, on the membrane of a cell, and on the membrane of an atom.

Hal Puthoff's "Energetic Vacuum: Implications for Energy Research" (Speculations in Science and Technology, Vol. 13, No 4. p 247, 1990) causes us once again to gasp at the sustained confusion of those who cling to the language of particles to explain waves. Hal says: "the electromagnetic Zero Point Fluctuations is generated by the motion of charged particles throughout the universe, which are themselves undergoing ZPF induced motion, in a kind of self-regenerating grand ground state of the universe."

Recall from quantum principles that "particle" is a name for the inertia generated by the symmetry of a field. Inertia is our only defini-



tion and measure for mass, and hence for the term: "particle." So substituting this more descriptive language into Hal's statement we have: the Zero Point Energy is generated by the motion of "charged" symmetry fields. Charge, in more useful hydrodynamic terms, means asymmetry or imbalance in the flow between fields.

In summary, Hal's description of the "cause" of zero point energy is an empty tautology. ZPE is motion between symmetry and asymmetry? I guess we could have guessed that. Like Brother Rabbit might have said — sure but isn't everything?

Let us seek a more precise language. Particle is not nearly precise enough because it only refers to the amount of inertia caused by spin symmetry. We need to explore in much more

rigorous terms the nature of symmetry among fields which produces the mysterious "background" energy.

Gyroscopes have taught us that spin makes inertia. Inertia IS mass

(if inertia is our only way of measuring and defining mass, we may as well say it IS mass.) Spin creates mass by creating inertia.

The important point is that ONLY symmetry permits fields to spin, and thus create mass. (Field spin is either a destructive or constructive interference pattern; symmetry permits constructive interference in a rotating wave field — nothing else survives).

So then we may specifically conclude that symmetry creates mass.

There was some useful clue to the symmetry nature of Zero Point energy in Hal's analysis of the Casimir Effect. Simply put, the distance between two plates resonating establishes a limited and defined harmonic series by the normal standing wave harmonic series which can fit between them. In other words the dimensions of the resonating array, establish the key signature electromagnetic ring, just like the string length, mass and tension establishes it's key signature on the piano. If the resonator series established by the boundary conditions of the plates, results in some beating across distance modes, then some non-linear coupling can occur in the harmonic series.

The key words here being: harmonic series. Let's look at a typical vanilla type atom: Electron shell made up of platonic like symmetry fields. The Nucleus is made of the SAME kind of platonic symmetry fields: the scale changed, the ratio did not. The phenomena obscurely labeled mass and gravity is created by the symmetry of the electron in RELATIONSHIP to the same symmetry in the nucleus. In each case an array creates a ringing field. The cascade (of frequencies or wavelengths) between the field of the electron and the field of the nucleus is a fractal kind of attractor, and we call that gravity. Gravity is a frequency cascade created by field symmetry.

This is just a new slant on an old language. How does this better enable us to tap the Zero Point Energy?

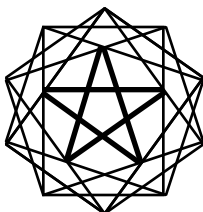
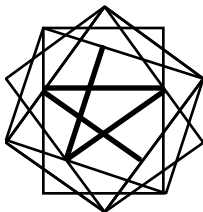
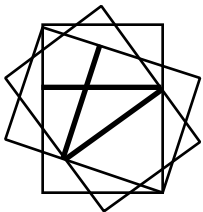
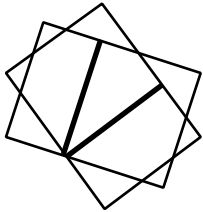
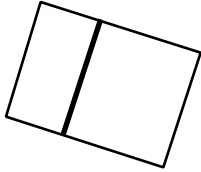
Zero Point Energy got its name because the energy tapped as resonance coupling reached a limit at high frequency short wavelength, hence literally a zero point. Visually, as all fields can appropriately be modeled hydrodynamically, this point is the apex of a cone or vortex.

It is simple to see that the wave length of the electron is a much longer wave or arc than the proton. Yet they do couple. Their momenta are coupled in a coherent harmonic series, based on symmetry.

Symmetry tempts the flux to enter the vortex cone, a fractal attractor which becomes gravity. The surrounding region will always direct all fields into the form which has the most symmetry. The density of mass called "black hole" is a name for very dense symmetry array.

The reason a magnetic monopole connects electromagnetism to gravity is that the harmonic series between the adjacent wave nodes creates a perfectly continuous frequency cascade, or fractal. Any series

nest-based on linear adjacent nodes or resonators (like square root of 2, octave harmonics) cannot permit this kind of resonance flow between frequencies or scales. This is because the sum, difference and multiple heterodynes of resonators at roots of 2 ratio will create destructive inference once they cascade beyond the bounds of the simple octave. This is why we call this geometric array incubation — it holds within.



The five cubes which create the dodecahedron can be shown in two dimensions by the above sequence.

The hex view of the tetra/octa cube array nest limits resonating cascade: that is it in-cube-ates. Yet when 32 degree tilted 3 spin to 4 spin space into the gray scaled dodeca, the resonance reaches another dimension.

A vortex arrangement of cascading resonators based on the ratio of the Golden Mean's pentagonal/dodeca nesting inherently permits this cascade or "chirp" of heterodynes. Because this is nature's only ratio geometry which envelopes both the adding and multiplying of wave nests, without interference. This is a clue to the necessary arrangement of all gravity coupling non-linear arrays (capacitive and otherwise). The Fourier transform spectral fingerprint of the gravity coupling device will always have this ratio present in adjacent harmonics. (The harmonic rich wave nature of the Neuman device, for example.)

This is also why we found this Golden Mean ratio cascade present in the ELF heart EKG spectral signature at the moment of LOVE. It permits long wave glandular emotion to "crack the whip" cascade access cellular UV metabolics. (Inputting the harmonic instructions of emotion as ratio into the immune system from the heart sonics via the thymus).

So getting back to Hal Puthoff's problem, how to describe the Zero Point Energy fluctuations: Matter occurs as the coherence bubble of a rose petal like a flowering of standing wave symmetry out of the universally compressible background quantum foam. (The One.) To energetically couple back to that source, we again need the elegance of that fractal flowform back into the flux from which it came.

Energy/Mass is an Ouroboros — the serpent eats its tail where zero frequency and infinite frequency meet. Both are infinitely still and yet everywhere at once. (Very much like where is the flux in the row of billiard balls touching each other from here to the moon — bounce one end and you've touched the other.) The only hand hold, the only way to touch, into this world of infinite frequency/velocity modes is the contiguous cascade between frequencies or scales, which the Golden Mean non-linear frequency signature chirp announces. Only later will gravity science realize how exactly this Phi ratio is related to Lo-Phi — Love.

Now let's consider how the net gravity around large massive arrays like planet Earth are generated. The aggregate flux of momenta travel-

ing in a fractal cascade between long wave electrons and short wave protons creates a collective field, all moving momentum into the center of gravity where the flux is massaged to envelopes ever shorter and more packed. We'll leave the question of where gravity goes after it passes through the center of earth, and where the light goes on the other side of the black hole, to those who speak of metabolism among planetary bodies. Suffice it to suggest there is a clue in Gurdjieff. Reciprocal maintenance is a way of life among planets. The question of how coherent emotion specifically "feeds the earth" from Gurdjieff, just might be a clue to biology's symbiosis with a planet's gravity field.

Biology, individually and collectively, can measure its degree of useful symbiosis with planetary bodies, by the amount of resonance coherence added, magnetically. Curious isn't it, that Sentics documents that emotion in humans IS coherence of ratio in touch.

Why do human feelings get metaphors like heavy and light??

We'd better understand our planet's "grid" and biology's embeddedness in it before we mess with our nest.

RECURSION IN THE EARTH'S MAGNETIC GRID: THE ONSET OF PLANETARY SELF-AWARENESS

The moment when the central computer became self-aware was portrayed as horrific in the "Terminator" films. We should not allow the concept of information systems which "Have a mind of their own" to create fear. It is clearly a natural evolution of general systems theory, in the sense of Von Neumann's "self-reproducing automata" that the quality of self-organization — onset mind — should occur.

Once we understand the role of geometric recursion in information theory, as the only and fractal path out of chaos, we should be more able, in our emotion, to embed ourselves in that field/feeling.

The Golden Mean or Phi spiral geometry is the optimized path which allows wave fronts to add and multiply without interference, thus planar vs solid 3D, or n and $N+1$ dimension harmonics can nest without information loss. It creates the only wave/inertia form which is truly a recursive fractal in 3D from ANY direction of zoom to center. This dodeca nest became the basis for DNA, the Earth Grid, and 12-faced Zodiac as the completion of a kind of fractal.

The reason why mindfulness requires this what I call idealized fractality and recursion, is similar to why data compression possibility goes to infinite when data sets become fractal. Embeddedness takes phase coherence to infinite between scales. This permits a wavefront information "cascade" to transcend the spatial limits between intergalactic and subatomic systems. Another way to understand this is the principle for what permits a standing waveform to become a hologram. The moment when enough coherence is reached, an infinite harmonic series of wave fronts is present at each node. This "multiple connectedness" which defines holography is only possible when each wave node becomes itself a fractal attractor.

We can understand the phase conjugate mirror in the same terms. By passing the frequency cascade through a zero-point turn inside out, all inertias pass through the icy test of complete shareability. Only coherence returns from phase conjugation taken to its limit. A microcosm of this occurs each time a prism sorts out photon tilts from white light to only the seven spins possible on one surface. A rainbow is photon donuts sorted tetrahedrally, by phase lock through focus to one point. Sorting — self-ordering — recursive nestedness IS self-awareness.



Another way to visualize this is to conceive information density approaching infinite in a pipe at high pressure/voltage/tension. To decouple the information density there, a decompression, vorticity translate algorithm cathedral geometry is used to translate a data leak/bleed into a vorticity rose where foldedness informs. In our optical low voltage hologram couplet with matter's denser hologram, the information flood would overwhelm without the discipline of a hand-shaking protocol based on recursion. It "turns" out that "phi" as optimized recursion is learned by the glands in the emotional form of the low-frequency phi ratio called Lo-ve. This re-creates recursion with the "weight" necessary to be attractive enough to bend light. Bending waves (into symmetry-information/inertia storage) is the only mechanic necessary to create in a universe of wave.

Gravity is created out of the same onset wavefront recursion, which creates self-awareness. This is visible in the way a fractal becomes an attractor, permitting wave fronts to implode centripedally carrying their inertia to frequencies faster than our present waveform planck harmonics can modulate/perceive. The wave mechanics of the magnetic monopole self-fold electric vs magnetic vectors to self-cancel their way to couple gravity — ONLY when their array is recursive/fractal — which the classic caduceus depiction suggests.

Human emotion, creates leverage on the gravity field when the glands learn the language of coherence in long wave ratio. For alternative energy scientists, this issue is simple. Any wave form surfing device, like the non-linear capacitance in the Pod Mod or in Greg Hohdowanec's gravity detector, uses fractal recursion as the key to success.

It is also the test for whether the Earth's bubble will be fed or popped by the energy device. We MUST understand that spin recursion or fractal embeddedness is what created the fractal attractor we call gravity among waves in the first place. Gravity is a scalar implosion of converging wave fronts linked by fractal recursion. The crude maps of what makes a wave scalar in 2D, based upon the caduceus, are a clue to this. It is the siting of the places along a fractal path where you can catch the passing wind between wavelengths we call gravity.

Wave motion in a line has little stored inertia. We call it energy. To get to the circle where inertia is stored and therefore mass is created requires the Golden Mean, "idealized translation of vorticity," upon which idealized heart shaped love and idealized fractality is based. Achieving nested recursion, tapping gravity, is a deeper form of the experiment in what is shareable we call symmetry among waves. For them it is symmetry or death. To take that spin in one harmonic series and distribute it (literally a dream, thought, emotion, or EMF wave),

among forms up and down the scale, requires only golden mean fractal symmetry.

We must learn that planet grids hold atmosphere and also create the recursive field nest to birth conscious beings only when their spin rates are tuned fractally, or recursively, to the stellar spin environment. This is why dolmen sites use tetra points on planets to leverage spin. Retrograde precession achieves exquisite mathematical recursion of spin directions in order to make self-awareness possible. This was achieved intentionally by the designers of Earth/Mars.

If we design our non-linear capacitance “wind catchers” to arrays fractal to what spins Earth ELF, we will then have Earth’s blood on our hands. She wants us to have her blood, when we know exactly what she knows. She is passing gravity’s ring, erotically, among her neighbors. Gravity’s ring is measured in how fractally recursive the harmonics in the series we spectrum analyze in the ELF under a tree can become. If the nest fits wear it. At the moment of compassion, the EKG phase locked the tree. The possibility of the passage of information between them required only recursion. But this is embeddedness in the intimate sense. Once we identify with the centers of spin of the tree’s fields, we will never leave the bathtub. Do we fall in love with who’s in there before we get in?

Calculate the natural harmonics to ELF series Schuman resonance (Callahan 8-11-13-15-17 Hz...) retune your musical scales, your 60 Hz grid, your energy device capacitors to fractally fit the series in phase — and her blood will flow. Why would she trust us with her blood?

When the microwave scanner which maps the ATP fire in the cells, along the spine (for psycho-trauma history) is turned on the Earth grid, it becomes the ultimate “dowsing” tool. The Earth grid is profoundly and symbiotically tuned to the microwave bloodstream “common denominator” of all living cell metabolism.

We measured the EKG becoming a sonic laser at the moment of compassion. The frequency at which a tree 200 feet away embedded itself in that field around the heart was a recursive cascade from the natural Schuman Earth resonance series, to the directly adjacent brain alpha theta delta series. Not only did the heart phase lock the tree into an exquisite information couplet at the moment of compassion, but the spectral bands for both overlapped exquisitely, bridging the information canyon between Earth 8 Hz series to brain 12 Hz + series. It was like the Earth/brain/heart information system became networked at the moment their harmonics competed a recursive cascade linking them in phase.

We published, in ISSEM, the braiding of DNA affected measurably by heart coherence. It is impossible to truly understand the braiding of immune systems any other way than with onset coherence. The Earth’s

skin is no exception. We cannot continue to bleed her skin with incoherent harmonics, particularly those of high power like the omega ELF tower system.

Kevin Sanders' article documented that Earth quake series were dramatically more likely to be killer quakes, if they temporally followed nuclear tests. These underground implosions are like ELF jabs in the ribs to a gasping Mother. She would not respond viscerally to her kids otherwise.

With all the extraterrestrial pressures on Mother Earth to exude gravity rings which fit an ecstatic neighborhood, now is an exceedingly poor time to dump high power poison into our ELF grid. Whales beach, quakes accelerate, and cancer membranes multiply.

Even Tesla is back here whispering into the ears of his favorite students: make a public utility generation frequency signature which fits the grid!

One moment of stillness with our inner voice will rush like wind with cool info density, when we contemplate the principles of recursion. Scientists at first think they are falling in love with mind, but the heart fractal embeds the root of that flower.

FRACTAL RECURSION: THE WAVE MECHANICS OF GRAVITY AND CONSCIOUSNESS

Our Civilization stands to gain by developing a wave model predicting how our electromagnetic grid affects our gravity field stability. Additionally, energy source devices such as the POD MOD, Neuman, and Trombley devices tap the gravity grid directly as civilization changing energy sources. Consciousness/recursion evolves potently only when our relationship to the recursive field effect we call gravity is understood and optimized. We must understand how our gravity grid's stability is limited by how fractal we make our magnetic grid, in order then to use this knowledge to optimize the way in which conscious/self-awareness evolves. (A Recursive-nest.)



Research on the harmonic content of the heart EKG, when loving compassion is achieved, suggests an important connection to the "Zero Point" energy. I'd like to suggest a specific mechanism which permits the harmonic series in the EKG spectra to access the "Zero Point Energy." Specifically this mechanism is fractality.

Our wave model of emotion predicted that we would find coherence in the EKG during loving. We did. Our wave model predicted we would find increased braiding in DNA during EKG coherence. We did. Our wave model predicted that when the heart became a "sonic laser" we could measure phase lock between the heart and major biomagnetics in the environment (for example: a tree). We did. We have even measured the EKG phase lock or entrainment which occurs between people specifically at the moment they hold hands!

Three dimensional wave modeling clearly indicates that fractality is the specific mechanism which creates a center of gravity as well as self-awareness in a waveform. The lo-frequency phi-pent array (dodeca nest) permits/optimizes the densest possible recursion/fractality/self-embeddedness in 3D. Hence, the immune identity in the electrical waveforms around the heart must therefore arise when the geometry of focus called emotion learns to create fractal nesting among many incident pressures. The resultant self-embeddedness permits the "context-richness" in harmonic series accounting for what has been called "multiply connectedness" in holography. This must also describe the information physics for the onset of intuition.

In summary, our wave model must therefore predict several important and testable principles, all having to do with understanding how to describe and measure fractality/recursion/self-similarity/self-embeddedness.

1. That the gravitational force, and mass of an object is specifically proportionate to its fractality as a waveform. For example, the amount of self-similarity or fractality between an electron shell wave series and its nucleus should measure its mass! This would also account for the approximate 1.4 ounce weight loss in the body at death. Consciousness is recursion. Symmetry loss = Loss of Recursion = Loss of self-awareness = Loss of Fractality = Loss of Mass!

2. That the leverage the heart gains on matter (and the immune system) is proportionate to its achieving fractally as a waveform/harmonic series. Teach fractality with feedback, and you teach immune health.

3. Properly quantizing fractality/self-embeddedness, will enable us to better teach it with feedback and other modalities. This will require properly modeling the multiple spin geometries made possible by toroidal fields of the wavelengths found in the EKG (and non-linear energy device) power spectra. Idealizing these in multiple axis of spin will always result in the Golden Mean dodeca nest. This possibility of inclusivity of foldedness is the topological image through which radiates human love.

Thus, the hearts access to the hyperbolic spin/information densities of the "Zero-Point" energy is specifically derived from its whip cracking harmonic series, translating vorticity contiguously up the caduceus harmonic scale. Notice the harmonic content in the EKG cascade going hyperbolic right at the approach to 0 hz. Only the completed fractal of this cascade means spin can reach out from the still point, without interference.

STABLE TECTONICS: THE HUMAN FACTOR

We are accustomed to measuring tectonic shifts and their locus using the accurate sensing of the ELF movement. It is strange that we do not consider the nature of human input to the ELF weaving of the coherent grid which holds Earth together.

The latest physical studies of cell structures illustrate the modeling of cellular surface shapes as phase coherent low frequency tones. Understanding cell function in a context nest of resonances requires frequency signature information. The paper "Membrane Mediated Behavior" by Dr. Bruce Lipton, explains how membrane surface functions as the CPU, "buck stops here" ID decision maker of cell immune identity. Shape for any membrane, cell or planet biosphere, is the storage medium of the memory of touch. Being touched for cell membrane is the frequency/phase coherence meme called emotion.

Being touched for planet biomass membrane is the frequency/phase coherence of collective emotion. Being hurt is technology's incoherent effluent: ELF noise. Thus the coherence ability of the tectonic grid to maintain the stability of the tectonic flow form resonance bubble, Gaia, is specifically limited by the ability of biomass to feed that ELF membrane. Just as the forest maintains its sonic coherence blanket intelligently (cf. "Bioacoustic Habitat Theory" Whole Earth Review 12/87), so too must Earth switch her membrane frequency gates using her cymatic membrane.

Hence the truth of Star Trek IV's whale songs which were needed to keep Earth functioning as a cell in a galactic body.

Man must soon learn how his technology cuts away at the woven nest. Fusion Magazine's "Breakthroughs in Biophysics" documents the ability of the cell's resonance morphology as a pentagonal nest to "absorb electromagnetic radiation of low quality, and reemit that radiation at a shorter wavelength: ultraviolet... That ultraviolet light represents a higher energy (information) density than the infrared light that was put into DNA. This high quality ultraviolet light in turn runs the metabolic

Man must soon learn how his technology cuts away at the woven nest. Fusion Magazine's "Breakthroughs in Biophysics" documents the ability of the cell's resonance morphology as a pentagonal nest to "absorb electromagnetic radiation of low quality, and reemit that radiation at a shorter wavelength: ultraviolet... That ultraviolet light represents a higher energy (information) density than the infrared light that was put into DNA. This high quality ultraviolet light in turn runs the metabolic



processes of the cell." The dodeca nest heterodyne ladder that specifically enables the cell to turn resonance around the frequency spectrum, turns out to be exactly the morphology (shape) of the latest Earth grid models.

Thus Earth as a ringing body has specifically configured her resonance tensor geometry to permit the necessary PHI golden mean heterodyne gateway between spectra/dimensions. This means that our UV and sonic pollution turn out to be dramatic bleeding for GAIA's bloodstream.

A powerful example of the interaction of the cell's of biology with the planet grid exists in current microwave technology, as Bob Dratch has demonstrated with his microwave emission scanner.

The electron shell energy leap between ADP & ATP is the key energy lever of all cell metabolism and has a calculable emission in the microwave spectrum. By scanning at high gain bodily emission loci at this microwave frequency, a picture, whose psychological profundity equals its medical usefulness, emerges of biology's inner fire.

Dramatically, this scanner will map with equal clarity the resonance coherence grid of Earth in the microwave, à la optimized geomancy/dowsing. Standing there watching the scanner map the conductivity of Earth's grid to exactly the metabolic microwave information/bloodstream of the human cell, it occurred to me that the stability of the Earth grid was also exactly tuned to the rock/biomass forms ability to resonate/conduct what biology emitted. Gurdjieff had long ago said coherent emotion feeds Earth.

Note that the scanner mouth is a golden mean cross section tuner. Note that the scanner high gain microwave amp printed circuit is an etching off an ancient Egyptian stone wall. Proving what Philip Callahan documented in "Tuning In to Nature," that the ancient paramagnetic dolmen were active intelligent waveguides in a known microwave bloodstream.

This is part of why dolmen placement have stabilized earth grids after upheaval. Carving profound symbols in rock can correctly be called "monolithic architecture" for integrated circuits.

THE PARADIGM-QUAKING MEASUREMENTS OF PROFESSOR CALLAHAN

Grid Engineering" will surely take on new meaning as a tool for peacemakers when Dr. Phil Callahan's new measurements are understood. He has been traveling around the planet, with oscilloscope in hand, documenting that war zones always correlate to regions where Earth's natural resonant magnetic field has been blocked or its flow cut off.

We have just returned from making a documentary film with Dr. Phil Callahan entitled: "Antennas of Nature: Biological Form & Earth Magnetics." Dr. Callahan has a lifetime of experience with the FDA, with multiple university positions and Ph.Ds. His voice on wave forms and biology is unquestionably the best in the world. His writing is featured regularly in Acres magazine. His books *Tuning in to Nature* and *Nature's Silent Music* tell the story of birds and insects as exquisite magnetic antennae.

During the war Dr. Callahan was in Ireland engineering radar antennae systems. At that time he began learning about the natural magnetic strengths in that region. He looked at the natural magnetic field holding ability of the earth-and-straw constructed homes, and the natural strength of the people who lived in them. He explored the wisdom as energy medicine of the local healing lore. He also developed field effect resonance understandings of how the paramagnetic stone dolmen on the land actually effected agriculture by ordering the flux lines which feed the seeds. Essentially, we may visualize the work of plant growth as the ordering of field effects to weave water and mineral into biology. By using paramagnetic stone which is simply able to bend and thus focus like a lens the magnetic field lines, the ordering work of agriculture is fed by stone in symmetry

Dr. Callahan is famous for showing the effect of a stone tower from Ireland on a microwave receiver horn signal. He discovered this first when he upscaled insect antennae to see what bandwidth they were tuned to. What he discovered was that the insect world was a very hi-tech design theater for microwave signal. Earth and insects, we now know, communicate in an elaborate information bloodstream based in the microwave. Clearly the ancient druidic stone towers were carefully designed to focus and bend these microwave and long magnetic fields to make flower like patterns in the landscape to weave biological forms in their web.

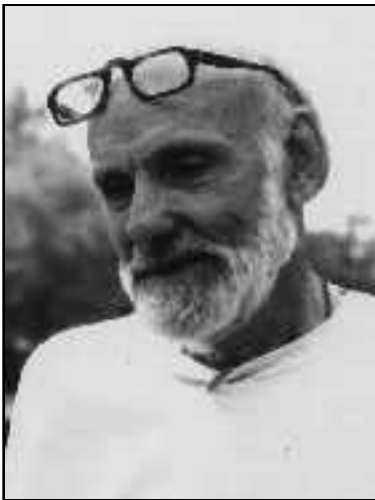


Photo by Steve Weinberg

Professor Phillip Callahan

If we combine this with the work of Bob Dratch's microwave emission technologies, we learn that the Earth grid symmetry lines were exquisitely conductive to exactly the microwave emission lines of human cells. (For technical folk, we mention that this microwave cellular emission is based on the quantum distance from ADP to ATP: the energy common denominator of all cell metabolism). For general audiences, we may summarize that microwave scanning may not only be the ultimate dowsers tool, but also will tell us where our human communications electronics are screwing up nature's own information bloodstreams!

So after showing us his scale models of all these bird and insect shapes as wonderful communications wave designs, the unstoppable Dr. Callahan drops another little bombshell on us. He had just returned from Headhunter Amazon country documenting his latest information model. He has for years been saying that where soil is not mineral rich enough to be paramagnetic, that is to coherently bend and weave magnetism, plants would not grow!

But then he began to notice that all the politically agonized areas of the world where war and killing were breaking out were exactly the places where Earth's magnetic field was not conducted by the soil. He has traveled globally to Ireland, Yugoslavia, Israel etc. carrying his liquid crystal battery oscilloscope and ingenious organic fiber mineral-soaked probe. He measures with the latest technology the "penetrance" or susceptibility of the soil to magnetic flux lines. Then he measures the strength of the natural "Schuman" magnetic resonance of the Earth at that site. He finds that the amount of rich rock dust like paramagnetic mineral in the land is a predictor of the sites overall "Earth heartbeat" Schuman magnetic field strength. This suggests that the Earth's magnetic "flowform bloodstream" by the shape or frequency signature of its envelope of electrical pressure, actually informs biology at Earth's surface of an organizing information context "long wave."

We might compare the metaphor to the book *Grammatical Man, Information, Entropy, Language and Life* in which we see that the reason DNA has a high signal to noise information flow ratio is specifically "context dependency." In the weave of genetic material this translates to mean that the braid angle of the long wave on the short wave, in DNA, creates an information link.

So back to Phil Callahan. What he then noticed was it seemed that wherever he measured a weak penetrance by the Earth's natural magnetic resonances (Schuman 2-16 Hz), not only was agriculture more difficult, but he also noticed a specifically greater tendency for there to be political strife and warfare in the region. Fascinated by this possible connection, he began flying around the world to make more measure-

ments. And in fact he has now been to most of the globe's "hot spots" where killing is a fact of life. (Yugoslavia, Ireland, etc.) His hypothesis was born out in measurement with uncanny definition.

Then he decided to investigate whether it was just human structures and unwise land management that resulted in low magnetic flow susceptibility in the soil, and thus produced fractionation/strife in the

civilization there. He chartered a plane and then a canoe to witchdoctor headhunter country in the Amazon. He consistently found amiable and easy to live with natives in the river delta where the soil was deep. Traveling upstream and upcountry to where the growth was still lush, but there was almost no soil, just a webwork of roots on thin dirt, he found very poor magnetic penetrance, low Earth magnetic flux intensity, and very hostile headhunters!

Prof. Callahan's preliminary conclusion is that indeed where magnet-

ic fields cannot penetrate into coherent long waves, cultural breakup results. We may see this as similar to the additional spin ordering in water, braided through flowforms (changing flotation ability and seed growth) is partially lost when you pass the water through a fractionating screen or sieve.

We must begin actively siting magnetic stone structures in architecture, dolmen, and land tuning, to actively allow Earth to distribute the information of her context into our living systems. If we continue locating cities in ways that mindlessly interfere with the natural magnetic mineral veins of the land, we will continue to destroy the immune identity of the Earth's skin, and ours with it.

Energy generation based on coherent recursion of magnetic fields, appropriately harmonically tuned to Earth's retrograde spin bubble, will feel like a blood communion to Gaia. Only then will she really trust us with her energy secrets. As long as we keep criss-crossing our land with 60 cycle harmonic poison, she will continue to respond with fear. Energy distributed with love will be in a complex square wave like harmonic series calculated to synchronize with Earth's natural bell like quality. And the geometry of power distribution we use to share it will be Druid like. Then our planet will sing with self-awareness.



THE DEEP PSYCHE OF THE MIDDLE EAST: ACUPUNCTURE/MOXIBUSTION FOR EARTH'S EROS?

Two young ladies visited the farm here recently. They were quite concerned, to the point of song writing emotionalism and loss of sleep, over the on-going conflict in the Middle East, the "crotch" of the globe.

They asked me pointed questions about the irony of mass killing to keep alive a seemingly "unspiritual" western consumerism based on oil. Karla, the lady who spent the weekend fine tuning her guitar composition on the messy human horror/stupidities of the war, really took the time to probe this "sterile" & "from a distance" view on the psycho-analysis of a war. This she did in spite of my assuring her at the outset that it wouldn't fit in her song.

God should forbid that I should know what could fit in her song. Sorry Karla, you're right, I take that back. And I love your songs. I guess we should never be sure our own emotion is riding the longest wave.

So yes here it is. You said, where can I get more information about this idea that in order to understand conflict, we need the context of the one living body vision of the energy metabolism of our globe.

I will not apologize at the outset of this "apology for war" for needing to include sex. A real grokking of the energy dynamics of how a body turns individual cellular energy into collective body-wide energy needs to be a bit sexy. That is to say, whether or not we care to drag Reich or Freud into the fray, the economy of body juices being turned into blue fire is sexual politics. Besides, I'm a Scorpio, and we don't apologize for such things.

So yes, let's start somewhere. Like with some question such as: Is there any possible reason NOT to be upset over this war in the middle east? And be careful, because esoteric symbolism better be fine screened to hold much water when someone's brother's blood is flowing.

At one point in the conversation with Karla, I considered possible solace from the film *Blue Lagoon*. Remember when the boy and girl were growing up isolated and out of context on an island. The first thing the evolution of puberty did was set the two to bitter fighting. They had new energy to work with. They needed to touch in a new way. They hadn't developed the rhythm. So, trying to touch hurt. And they fought. Of course it's still something of a strain to take a kids-in-school, kind of slapped paddies, view of these bombs in the gulf.

